

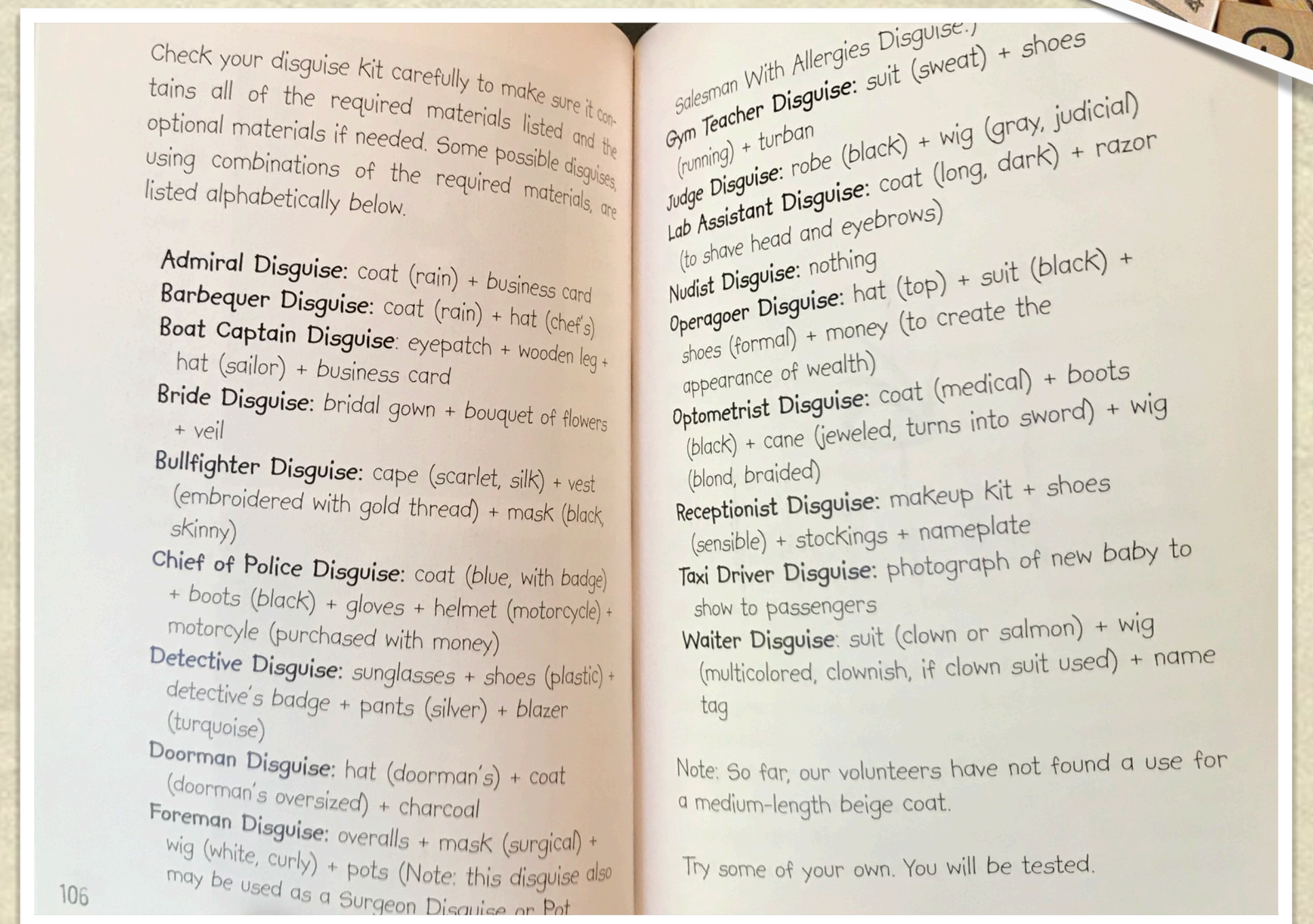
Dire Diversions: Awful Alter Egos

Count Olaf and his crew often wear **disguises** and create **aliases**. They may choose to scramble up the letters in their names to make an **anagram**. For example, an anagram of the name Brian could be Nirba.

They may also use **alliteration** or **rhyming** to confuse others. For example, Susan might call herself “Superstitious Susan,” or Brad might call himself “Sad Brad.”

Practice creating aliases using anagrams, alliteration or rhyming.

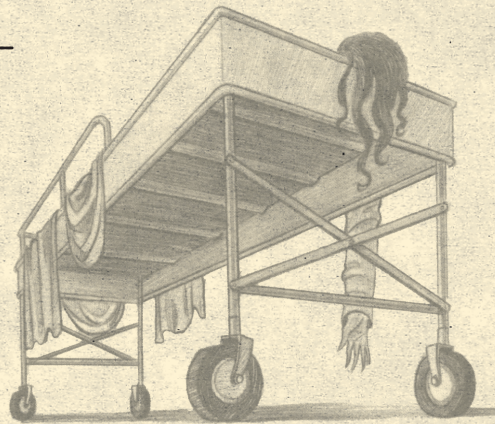
Bonus: Try out some of the various finery disguises from your V.F.D. Disguise Kit



Think Like a Baudelaire

In order to prevent Violet from having unnecessary surgery at Heimlich Hospital, Klaus and Sunny must unscramble anagrams to find out which room she is in. Help them with your knowledge of the notorious characters in *A Series of Unfortunate Events*.

- 1) Vinek _____
- 2) Lenuc Notmy _____
- 3) Estuijc Tussars _____
- 4) Rochte _____
- 5) Nutoc Falo _____
- 6) Deamam Ullu _____
- 7) Nucdan Miragque _____
- 8) Tuna Posehijen _____
- 9) Lhip _____
- 10) Maltricae Tapss _____
- 11) Quacsej Tinecks _____
- 12) Hascerl _____
- 13) Reubc _____



Answers: 1) Kevin; 2) Uncle Monty; 3) Justice Strauss; 4) Hector; 5) Count Olaf; 6) Madame Lulu; 7) Duncan Quagmire; 8) Aunt Josephine; 9) Phil; 10) Carmelita Spats; 11) Jacques Snicket; 12) Charles; 13) Bruce

Illustrations © Brett Helquist

Dire Diversions:

INNOVATIVE INVENTIONS

Violet is always using the materials at hand to devise an invention when there's trouble.
Here is a scenario where you will need to invent something:

Unfortunately, you are trapped at the bottom of a well.
Describe or draw an invention that will help you escape using the following items:

A candle

A packet of gum

Eyeglasses

A large bucket

Fish food

Six envelopes

A beach ball

Five rubber bands

A pair of tongs

The French flag

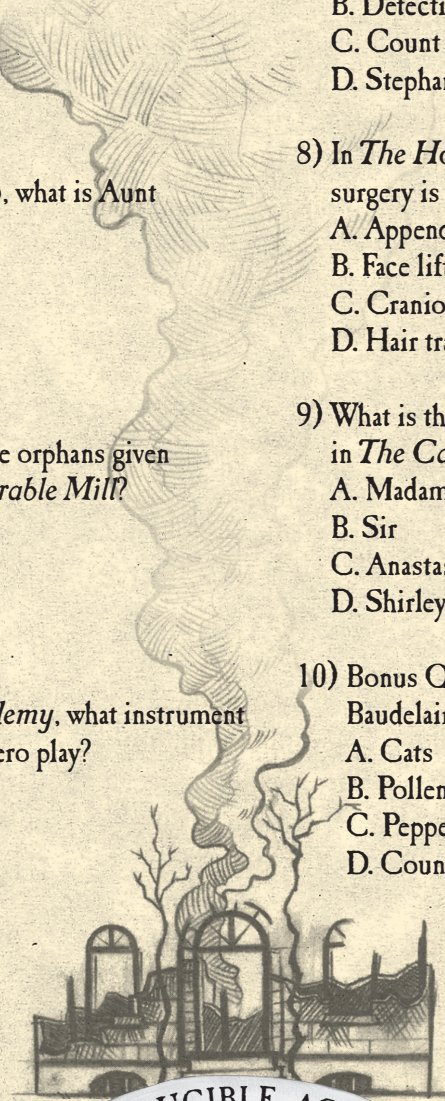
Shoelaces

A can of root beer

Terrible Trivia

Test your knowledge of the books in A Series of Unfortunate Events with the quiz below.

- 1) Where do we find the orphans at the beginning of *The Bad Beginning*?
 - A. At school
 - B. In bed
 - C. At the beach
 - D. In Mr. Poe's office
- 2) What kind of cake does Uncle Monty make to welcome the Baudelaire orphans to his home in *The Reptile Room*?
 - A. Carrot
 - B. Chocolate
 - C. 7-layer
 - D. Coconut cream
- 3) In *The Wide Window*, what is Aunt Josephine afraid of?
 - A. Telephones
 - B. Water
 - C. Radiators
 - D. All of the above
- 4) What are the Baudelaire orphans given for lunch in *The Miserable Mill*?
 - A. Pasta Puttanesca
 - B. Nothing
 - C. Chewing gum
 - D. Alphabet soup
- 5) In *The Austere Academy*, what instrument does Vice Principal Nero play?
 - A. Bongos
 - B. Violin
 - C. Harp
 - D. Guitar
- 6) What item below is deemed "in" by Esme Squalor in *The Ersatz Elevator*?
 - A. Pinstripe suits
 - B. Purple sneakers
 - C. Peas
 - D. Puppy dogs
- 7) What is Count Olaf's alias in *The Vile Village*?
 - A. Phil
 - B. Detective Dupin
 - C. Count Olaf
 - D. Stephano
- 8) In *The Hostile Hospital* what type of surgery is Violet scheduled to have?
 - A. Appendectomy
 - B. Face lift
 - C. Craniectomy
 - D. Hair transplant
- 9) What is the name of the fortune-teller in *The Carnivorous Carnival*?
 - A. Madame Lulu
 - B. Sir
 - C. Anastasia
 - D. Shirley
- 10) Bonus Question: What are the Baudelaire's allergic to?
 - A. Cats
 - B. Pollen
 - C. Peppermint
 - D. Count Olaf



Illustrations © Brett Helquist

REPRODUCIBLE ACTIVITY

www.lemonysnicket.com

Answers: 1) C; 2) D; 3) D; 4) C; 5) B; 6) A; 7) B; 8) C; 9) A; 10) C

A Series of Unfortunate Events

CONVOLUTED CODE

A cryptogram is a puzzle where each letter is consistently substituted with another. It is often used for infamous quotes, like those found in *A Series of Unfortunate Events: The Blank Book*.

The first cryptogram has been done for you. As you crack the code, use it to solve the other cryptograms below. If you are having a lot of trouble, anonymous volunteers suggest using the code at the bottom of this page.

Zvfwfysac cgneah rx icyfcgxh, ynl oxh isclvfxc.

Has the following solution:

Criminals should be punished, not fed pastries.

1. Uaefyu lgfyuc ln s hnnv fc yxkxv s kxvp xdzflfyu lgfyu ln bslzh.
2. Eyonvleysl xlgfyuc zsy gsiixy ln zxaxvp sc xscfap sc lgxp zsy gsiixy ln zgfahvxy.
3. Canb cxvkfzx fc nyx no lgx hfcshkslsuxc fc gskfyu fyosylc onv caskxc.
4. Lgx bnvah fc s gsvev-czsvev iaszx.
5. Fl fc rxllxv ynl ln wsqx lnn wsyp sccewilfnyc, isvlfzeasvap fy lgx wnvyfyu.
6. Cnwx zvpilnuvswc svx ynl bnlvg cnakfyu.

Now try making up your own cryptograms and have your friends solve them.

S	R	Z	H	X	O	U	G	F	L	Q	V	A	W	X	M	I	F	V	C	T	E	K	B	D	P	M
A	B	C	D	E	F	G	H	I	J	K	L	M	N	O	P	Q	R	S	T	U	V	W	X	Y	Z	
Cryptogram Code:																										

Answers: 1) Cling things to a door is never a very exciting thing to watch. 2) Unfortunate things can happen to cclery as easily as they can happen to children. 3) Slow service is one of the disadvantages of having servants for slaves. 4) The world is a harum-scarum place. 5) It is better not to make too many assumptions, particularly in the morning.

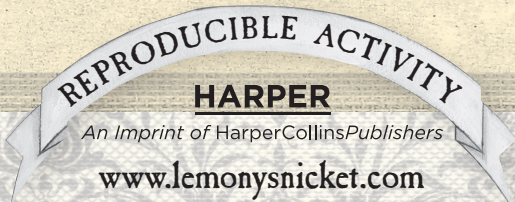


Illustration © Brett Helquist

SECRET IN A MESSAGE

Below is a letter from Lemony Snicket warning you of the whereabouts of Count Olaf. Circle the spelling errors and write out the correct or missing letters on the lines provided at the bottom of the page. When you have completed this grueling task, it will reveal one of the places that Count Olaf terrifies the Baudelaires.



Dear Reader:

If this letter has reached you, it must mean that you have read the woeful tales of the Baudelaires. Against your better judgment and my konstant warnings, you have chosen to reed about the misery and horrors that have befallen Violet, Klaus, and Sunny Baudelaire. From the terrible news on the beach, to the deadly serpents, the hungry leeches, and the angry mob, you have sadly shared in their suffering. Now, they need your help. If you are up to this task, you can help find the Baudelaires to warn them that Court Olaf is on the prowl.

However, you must fand the clue yourself. When you have uncovered the clue, be very careful not to say it out loud, for surely Count Olaf and his associates are close by, listening to ebery word you say. So, keep it to yourself, but be sure to find a way to relay the messuge to the Baudelaires without being caught.

I hope you, unlike the ill-fated Baudelaires, are lucky enough to survive this risky mission.

With al due respect,

Lemony Snicket

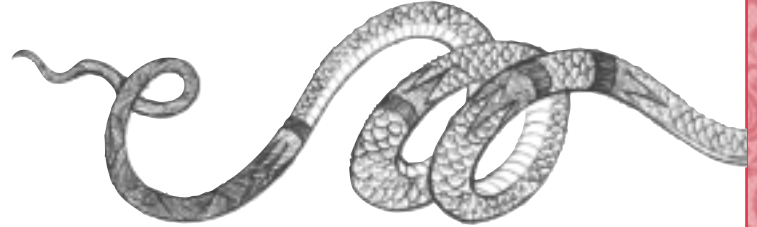
Lemony Snicket

C



SCAVENGER HUNT

Klaus Baudelaire uses books to find solutions to problems at hand. Given the unfortunate events below, find the title of a book where you might find information that can help you.



- 1** You overhear a conversation between Count Olaf and a French-speaking associate. The associate says, “Je veux des gants noir.”

Title of a book that might help you:

.....

- 2** One of Count Olaf’s associates is making you dinner and insists that cyanide is a key ingredient in chicken parmigiana.

Title of a book that might help you:

.....

- 3** You are being chased by a pack of wild dogs and need to find a way to tame them.

Title of a book that might help you:

.....

- 4** You are told that you may not see the Quagmire triplets because they have a highly contagious disease called scoliosis.

Title of a book that might help you:

.....

- 5** You are trying to plan an escape route to another country, but you’re not familiar with the local roads.

Title of a book that might help you:

.....

- 6** Violet receives a mysterious plant as a gift from an unidentified secret admirer. The plant has red, waxy leaves.

Title of a book that might help you:

.....

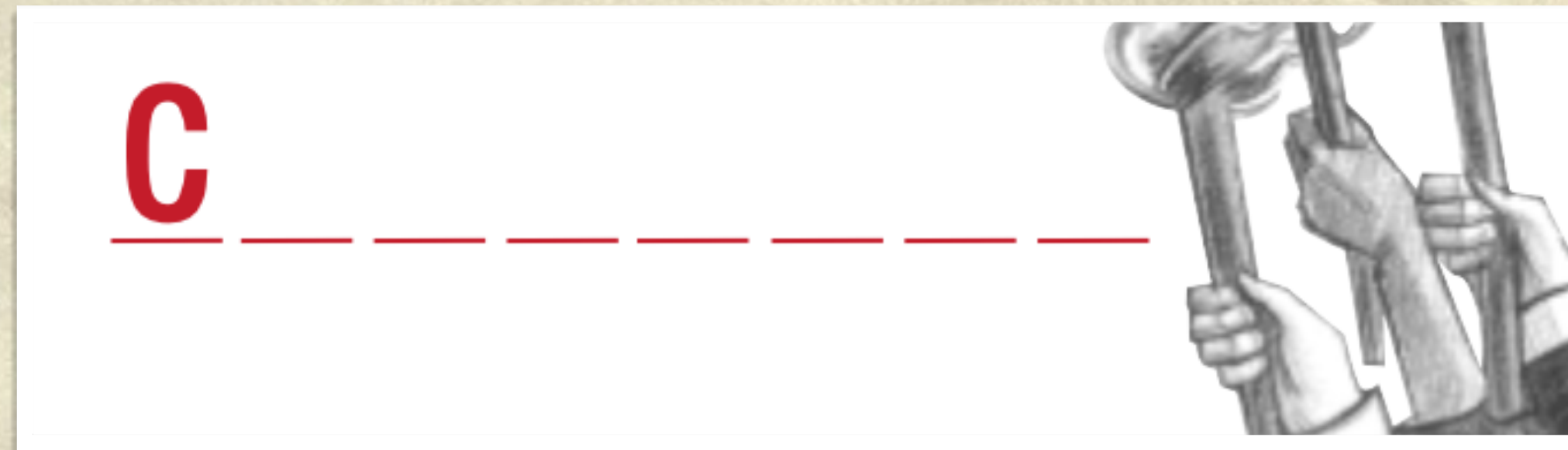
The Solutions

Secret Message:

The errors:

- konstant (constant)
- reed (read)
- terrible (terrible)
- Court (Count)
- fand (find)
- ebery (every)
- messuge (message)
- al (all)

Answer: CARNIVAL



Scavenger Hunt:

Try using these books to find the information you need:

- A French/English dictionary
- A cookbook
- Books about dogs
- A medical book
- A road atlas
- Books about plants

